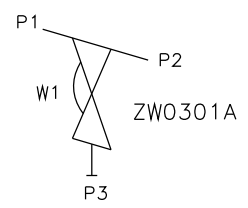


DN65 TO DN100
MAINLINE ONLY

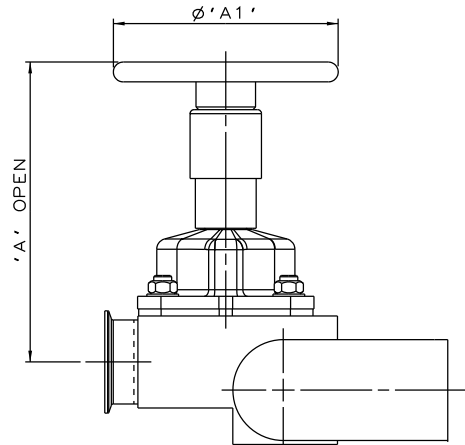
MAINLINE SIZE	A	B	C	D	ϕE	ϕF	G	BODY WEIGHT
mm	mm	mm	mm	mm	mm	mm	mm	Kgs
DN65	95.0	50.0	42.5	55.0	76.1	70.9	342.0	11.0
DN80	114.0	50.0	48.9	61.0	88.9	83.7	380.0	13.3
DN100	152.0	50.0	61.6	72.0	114.3	109.1	456.0	18.5



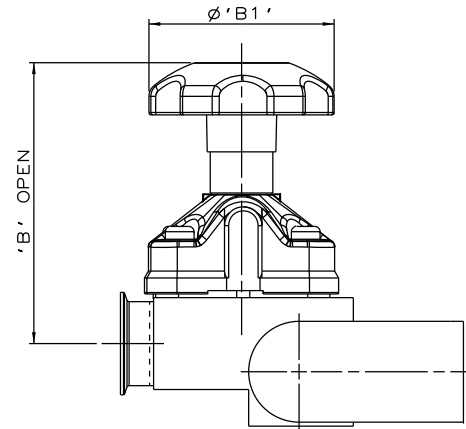
ORIENTATION AS PER
P&ID DIAGRAM FOR
OPTIMUM DRAINABILITY.

The information on this sheet is Private and Confidential and is the property of Crane Process Flow Technologies Limited and must not be published directly or indirectly in any manner whatsoever without the written permission of the Company and must not be used in any way detrimental to their interests.
© Crane Process Flow Technologies

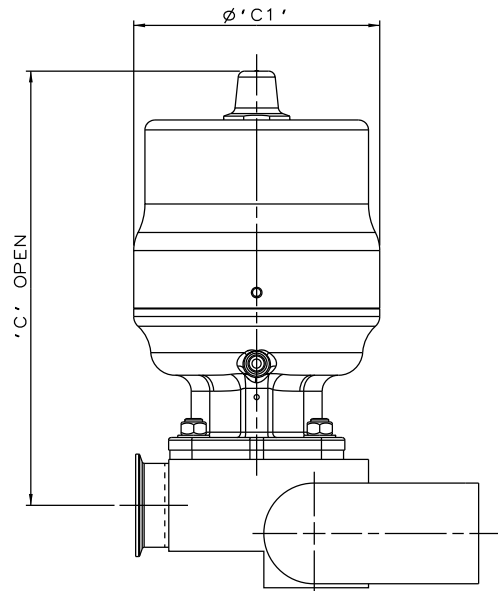
CRANE	Process Flow Technologies A Crane Co. Company	Saunders The Science Inside
Title SCHEDULE OF LEADING DIMENSIONS FOR DN65 WEIR POINT OF USE 'T' BODY WITH : MAINLINE : ISO 1127 S1 BUTT WELD ENDS BRANCH : DN65 HYGIENIC CLAMP END WITH ISO 1127 S1 BORE		
Drawn R1	Date 17.04.12	UNCONTROLLED IN HARD COPY FORMAT
Checked RND	Date 17.04.12	
First Angle Projection Method E		DO NOT SCALE
Drawing No. WEB-190		Issue. 1



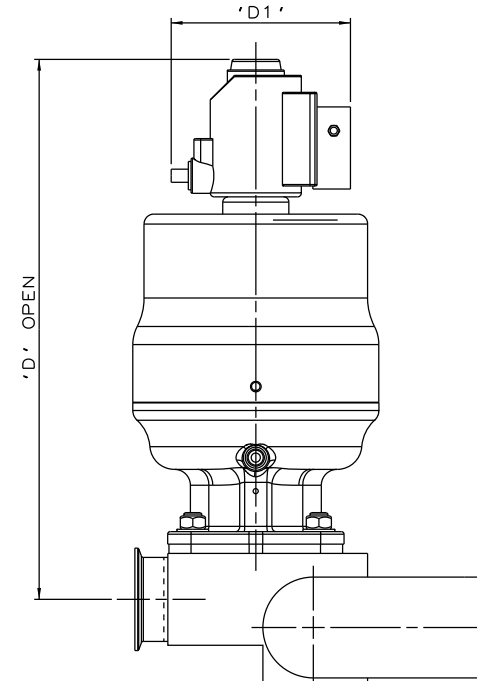
SS NON SEALED
BONNET ASSEMBLY



PES BONNET ASSEMBLY



*S360 ACTUATOR



*S360 ACTUATOR
WITH I-VUE SENSOR

*DIMENSIONS SHOW MAXIMUM ENVELOPE FOR ALL MODES

BRANCH SIZE		A		A1		B		B1		C		C1		D		D1	
mm	inch	mm	inch	mm	inch	mm	inch	mm	inch	mm	inch	mm	inch	mm	inch	mm	inch
DN65	2.50	234.1	9.22	170.0	6.69	227.1	8.94	140.0	5.51	335.1	13.19	186.0	7.32	415.1	16.34	136.0	5.33

The information on this sheet is Private and Confidential and is the property of Crane Process Flow Technologies Limited and must not be published directly or indirectly in any manner whatsoever without the written permission of the Company and must not be used in any way detrimental to their interests.
© Crane Process Flow Technologies

CRANE Process Flow Technologies
A Crane Co. Company

Saunders
The Science Inside

Title
SCHEDULE OF LEADING DIMENSIONS FOR DN65/2.50
WEIR 'T' BODY WITH MAINLINE BUTT WELD ISO 1127 S1
ENDS, BRANCH HYGIENIC CLAMP END WITH ISO 1127 S1 BORE.
FITTED WITH TOPWORKS OPTIONS

Drawn R1	Date 09.05.17	UNCONTROLLED IN HARD COPY FORMAT
Checked RND	Date 09.05.17	
First Angle Projection Method E	DO NOT SCALE	Drawing No. WEB-190-ASSY
		Issue. 1